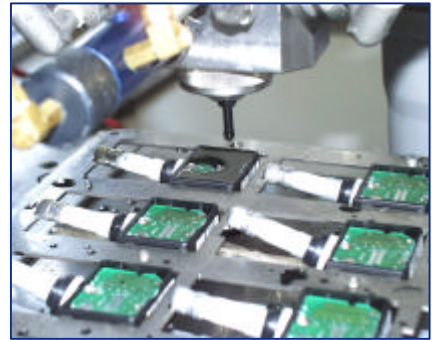


task description potting of safety sensor with two component resin

application field automotive

properties

- ✓ cycle time: 4 sec
- ✓ 3- shift operation (4,0 Mio. parts/y.)
- ✓ variant detection
- ✓ automated loading station
- ✓ speed-controlled part transport
- ✓ preheating
- ✓ curing



construction

automated material conditioning (1)

- degassing / temperature-regulating

1



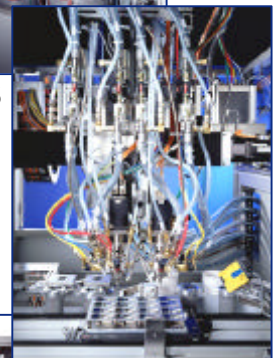
part pretreatment (2)

- preheating of the parts with an hot-air blower

dispensing (3)

- twin-head dispensing
- resin material metering with precise gear wheel pumps
- temperature control through mix head
- variant detection of different part models
- automated accuracy check

3



curing (4)

- vertical convection oven (shuttle system)

4



loading workplace (5)

- automated loading (robot)

layout drawing

